

NEW MOTOR VEHICLE REGISTRATIONS

AUSTRALIA
PRELIMINARY

EMBARGOED UNTIL 11:30AM WED 22 FEBRUARY 1995

THIS MONTH'S KEY FIGURES

TREND ESTIMATES

	Jan 95	monthly % change	annual % change
Total new motor vehicle registrations	53 946	0.9	13.2
Passenger vehicles	44 763	0.9	12.5
Other vehicles	9 182	1.1	16.5

SEASONALLY ADJUSTED

	Jan 95	monthly % change	annual % change
Total new motor vehicle registrations	54 806	4.2	13.2
Passenger vehicles	45 977	6.6	12.9
Other vehicles	8 828	-6.8	14.6

ORIGINAL ESTIMATES

	Jan 95	monthly % change	annual % change
Total new motor vehicle registrations	42 947	-18.7	17.1
Passenger vehicles	36 289	-17.4	17.2
Other vehicles	6 658	-24.8	16.9

THIS MONTH'S KEY POINTS

TREND ESTIMATES

- Passenger vehicle registrations have been rising steadily since August 1993 resulting in an upward trend for total registrations which is now 13.2 per cent higher than the level in January 1994. Other vehicle registrations have also been rising steadily since September 1994 and stand 0.2 per cent above the most recent peak in June 1994.

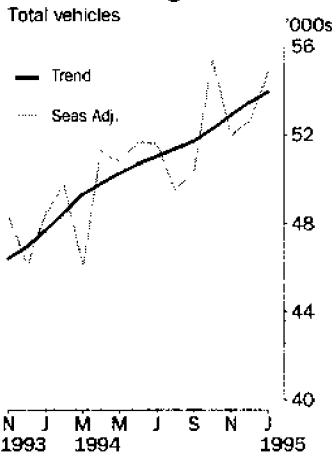
SEASONALLY ADJUSTED ESTIMATES

- Most States and Territories showed strong percentage increases in total registrations over the previous month. However, Queensland and the Australian Capital Territory recorded falls of 12.3 and 1.1 per cent, respectively. Despite the 6.8 per cent fall in registrations of other vehicles, total registrations rose by 4.2 per cent.

ORIGINAL ESTIMATES

- While total new motor vehicle registrations fell by 18.7 per cent in January 1995, they exceeded January 1994 by 17.1 per cent. Passenger vehicles fell by 17.4 per cent and other vehicles fell by 24.8 per cent from December 1994. Total registrations fell in all States and Territories except the Northern Territory which rose by 3.2 per cent.

New vehicle registrations



INQUIRIES

- For further information about these and related statistics, contact Kevin Yeadon on 06 252 6255, or any ABS Office.

NEW MOTOR VEHICLE NOTES

FORTHCOMING ISSUES

ISSUE	RELEASE DATE
February 1995	22 March 1995
March 1995	26 April 1995
April 1995	24 May 1995

* * * * *

CHANGES IN THIS ISSUE

There are no changes in this issue.

* * * * *

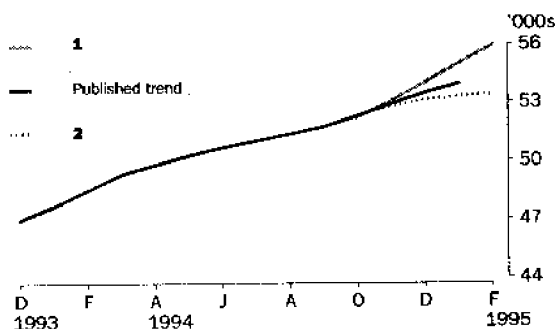
TREND REVISIONS

The most recent trend estimates are likely to be revised when new seasonally adjusted estimates become available.

The graph below presents the effect of two possible scenarios on the previous trend estimates:

- 1 The February seasonally adjusted estimate for total vehicle registrations is higher than the January seasonally adjusted estimate by 5.4%.
- 2 The February seasonally adjusted estimate for total vehicle registrations is lower than the January seasonally adjusted estimate by -5.4%.

The percentage change of 5.4% was chosen because the average absolute percentage change, based on the last 11 years, has been 5.4%.



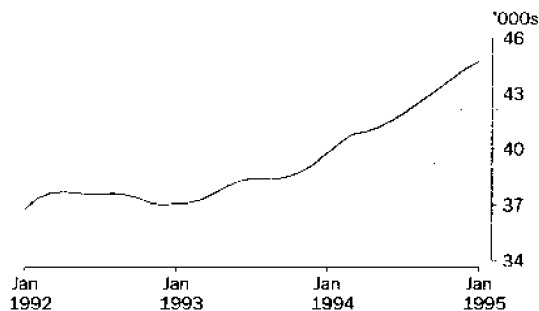
A 5.4 per cent rise in total seasonally adjusted new motor vehicle registrations in February 1995 would produce a moderate increase in the revised trend from October 1994. A similar fall in the February seasonally adjusted figure would show a flattening in the revised trend.

RICHARD MADDEN
ACTING AUSTRALIAN STATISTICIAN

VEHICLE REGISTRATIONS BY TYPE: Trend series

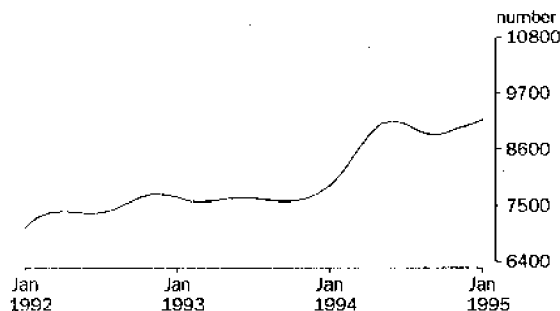
PASSENGER VEHICLES

The trend has been rising steadily since August 1993 to be 12.5 per cent above the trend level in January 1994. The passenger vehicle trend now stands at its highest level since May 1985.



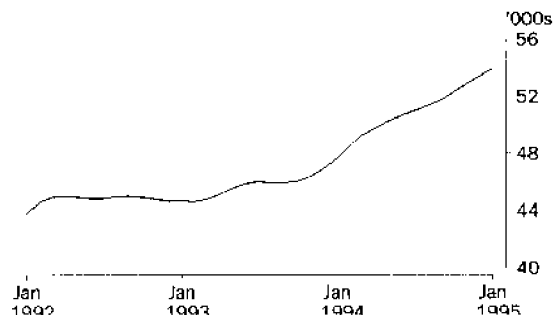
OTHER VEHICLES

The trend rose steadily from October 1993 to a peak in June 1994. Following successive small falls in July, August and September 1994 the trend has recovered to be 3.4 per cent above the level in September 1994 and 0.2 per cent above the previous peak in June 1994.



TOTAL VEHICLES (EXCLUDING MOTOR CYCLES)

The trend has shown steady growth since September 1993 with rises strengthening from December 1993. The trend level is 13.2 per cent higher than the level in January 1994 and is 0.7 per cent below the previous highest trend level in April 1990.





NEW MOTOR VEHICLES, Registrations By Type: All Series

Month	Passenger vehicles	Other vehicles	Total
ORIGINAL			
1993			
November	41 662	8 446	50 108
December	40 746	7 791	48 537
1994			
January	30 967	5 695	36 662
February	38 859	7 088	45 947
March	43 715	8 971	52 686
April	36 003	8 052	44 055
May	43 102	10 096	53 198
June	45 240	12 713	57 953
July	42 280	9 649	51 929
August	44 684	8 244	52 928
September	42 374	8 064	50 438
October	45 354	8 988	54 342
November	45 485	9 949	55 434
December	43 948	8 850	52 798
1995			
January	36 289	6 658	42 947
SEASONALLY ADJUSTED			
1993			
November	40 179	8 094	48 273
December	38 197	7 907	46 104
1994			
January	40 726	7 702	48 428
February	41 888	7 865	49 754
March	38 218	7 871	46 089
April	41 836	9 410	51 246
May	41 591	9 174	50 765
June	41 467	10 183	51 651
July	42 172	9 425	51 597
August	41 371	8 096	49 467
September	41 898	8 479	50 377
October	46 316	9 035	55 351
November	42 629	9 312	51 941
December	43 128	9 473	52 602
1995			
January	45 977	8 828	54 806
TREND ESTIMATES ¹			
1993			
November	38 816	7 620	46 435
December	39 243	7 716	46 959
1994			
January	39 786	7 885	47 671
February	40 338	8 145	48 483
March	40 793	8 497	49 290
April	40 951	8 843	49 794
May	41 181	9 088	50 269
June	41 520	9 161	50 680
July	41 908	9 088	50 996
August	42 376	8 959	51 335
September	42 838	8 879	51 717
October	43 351	8 910	52 261
November	43 879	9 001	52 879
December	44 359	9 085	53 444
1995			
January	44 763	9 182	53 946

¹ Trend estimates for July 1994 to December 1994 have been revised.

NEW MOTOR VEHICLES, Registrations By Type: Original

Month	Passenger vehicles	Light commercial vehicles	Rigid trucks	Articulated trucks	Non-freight carrying trucks	Buses	Total (excludes motor cycles)	Motor cycles
1993								
November	41 662	6 948	811	302	78	307	50 108	1 811
December	40 746	6 309	851	255	70	306	48 537	1 543
1994								
January	30 967	4 686	508	176	23	302	36 662	1 481
February	38 859	5 813	710	214	43	308	45 947	1 613
March	43 715	7 432	882	265	49	343	52 686	1 614
April	36 003	6 794	676	256	50	276	44 055	1 285
May	43 102	8 424	946	323	66	337	53 198	1 315
June	45 240	10 518	1 221	428	104	442	57 953	1 420
July	42 280	7 776	1 078	396	55	344	51 929	1 332
August	44 684	6 528	973	376	68	299	52 928	1 569
September	42 374	6 390	877	384	94	319	50 438	1 677
October	45 354	7 225	920	413	87	343	54 342	1 658
November	45 485	7 974	1 058	449	102	366	55 434	1 981
December	43 948	6 979	1 017	409	62	383	52 798	1 892
1995								
January	36 289	5 428	600	268	43	319	42 947	1 876

NEW MOTOR VEHICLES, Registrations By State: All Series

Month	New South Wales	Victoria	Queensland	South Australia	Western Australia	Tasmania	Northern Territory	Australian Capital Territory	Australia
ORIGINAL									
1993									
November	18 628	11 248	8 585	3 490	5 361	1 233	548	1 015	50 108
December	16 130	11 608	9 421	3 172	5 470	1 333	448	955	48 537
1994									
January	12 896	8 173	7 373	2 239	4 078	766	299	838	36 662
February	16 295	10 700	8 455	3 187	5 016	929	434	931	45 947
March	18 775	12 713	9 167	3 645	5 702	967	586	1 131	52 686
April	14 642	9 885	10 447	2 651	4 246	811	595	778	44 055
May	19 996	11 950	10 149	3 235	5 327	1 017	562	962	53 198
June	20 719	13 246	10 476	4 022	6 332	1 243	712	1 203	57 953
July	17 641	11 719	11 636	3 393	4 883	1 152	600	905	51 929
August	19 943	12 382	9 032	3 382	5 270	1 331	516	1 072	52 928
September	18 124	11 489	9 230	3 619	5 245	1 247	550	934	50 438
October	19 342	12 743	10 762	3 371	5 358	1 274	592	900	54 342
November	20 419	12 554	9 910	3 733	5 925	1 280	607	1 006	55 434
December	17 623	12 527	10 918	3 490	5 379	1 363	463	1 035	52 798
1995									
January	15 908	9 626	7 356	2 876	5 021	879	478	803	42 947
SEASONALLY ADJUSTED									
1993									
November	17 073	11 143	8 990	3 199	5 134	1 258	539	937	48 273
December	16 188	10 921	8 506	3 084	5 116	849	495	945	46 104
1994									
January	16 731	11 365	9 630	3 054	4 893	1 082	439	1 235	48 428
February	17 731	11 264	9 390	3 447	5 249	1 110	528	1 035	49 754
March	16 147	11 503	7 762	3 223	5 023	925	511	995	46 089
April	17 545	11 008	12 299	3 045	4 808	1 028	595	917	51 246
May	17 891	11 451	10 192	3 247	5 380	1 112	520	973	50 765
June	18 154	11 895	9 397	3 648	5 672	1 228	588	1 069	51 651
July	17 998	11 487	10 914	3 428	5 126	1 182	572	889	51 597
August	18 470	11 414	8 706	3 208	5 029	1 299	460	881	49 467
September	18 656	11 474	8 993	3 393	5 287	1 085	589	899	50 377
October	20 371	12 707	10 724	3 300	5 443	1 294	567	946	55 351
November	18 262	12 192	9 769	3 410	5 598	1 267	576	867	51 941
December	18 391	12 473	10 628	3 459	5 100	887	550	1 113	52 602
1995									
January	20 107	12 722	9 318	3 773	5 901	1 201	683	1 101	54 806
TREND ESTIMATES ¹									
1993									
November	16 197	10 823	8 788	3 105	4 966	1 055	483	1 019	46 435
December	16 419	11 004	8 870	3 124	4 986	1 039	490	1 026	46 959
1994									
January	16 685	11 164	9 092	3 151	5 022	1 026	500	1 032	47 671
February	16 957	11 289	9 419	3 192	5 057	1 021	514	1 035	48 483
March	17 210	11 371	9 790	3 239	5 089	1 036	529	1 026	49 290
April	17 384	11 392	10 029	3 282	5 096	1 065	542	1 003	49 794
May	17 646	11 421	10 135	3 324	5 106	1 110	551	975	50 269
June	17 992	11 472	10 061	3 354	5 137	1 162	554	947	50 680
July	18 320	11 557	9 910	3 362	5 171	1 201	550	924	50 996
August	18 600	11 698	9 778	3 362	5 214	1 221	546	915	51 335
September	18 797	11 881	9 722	3 365	5 272	1 212	550	917	51 717
October	18 954	12 086	9 810	3 383	5 342	1 187	562	936	52 261
November	19 099	12 300	9 911	3 431	5 429	1 159	579	971	52 879
December	19 229	12 493	9 968	3 494	5 519	1 133	597	1 011	53 444
1995									
January	19 354	12 677	9 944	3 577	5 604	1 112	618	1 060	53 946

¹ Trend estimates for July 1994 to December 1994 have been revised.

NEW PASSENGER VEHICLES, Selected Make/Models: **Original**— January 1995

Make/Model	New South Wales	Victoria	Queensland	South Australia	Western Australia	Tasmania	Northern Territory	Australian Capital Territory	Australia
Ford									
Falcon/Fairmont	1 098	1 008	635	201	329	53	25	63	3 412
Festiva	426	195	224	123	181	23	5	19	1 196
Laser	386	197	190	92	99	18	8	21	1 011
Other	131	141	82	27	25	3	1	6	416
Total	2 041	1 541	1 131	443	634	97	39	109	6 035
Holden									
Commodore/Calais	1 130	698	679	184	238	66	20	54	3 069
Barina	330	192	146	50	120	32	2	26	898
Apollo	130	46	52	16	43	7	..	7	301
Other	202	119	105	53	80	11	2	9	581
Total	1 792	1 055	982	303	481	116	24	96	4 649
Hyundai									
Excel	734	379	321	91	318	32	20	52	1 947
Sonata	99	37	36	2	42	5	4	4	229
Lantra	88	37	18	9	37	8	2	4	203
Other	15	15	3	3	4	2	1	..	43
Total	936	468	378	105	401	47	27	60	2 422
Mazda									
121	398	135	131	44	57	17	7	47	836
323	214	167	97	45	63	9	8	19	622
626	138	91	68	22	43	5	2	3	372
Other	95	78	23	12	27	2	2	4	243
Total	845	471	319	123	190	33	19	73	2 073
Mitsubishi									
Magna	879	671	407	263	253	55	15	62	2 605
Lancer	462	323	217	114	186	24	6	33	1 365
Pajero	167	71	111	44	50	9	2	5	459
Other	155	104	60	23	25	4	6	8	385
Total	1 663	1 169	795	444	514	92	29	108	4 814
Nissan									
Pulsar	220	120	77	41	51	13	7	14	543
Patrol	62	44	38	15	46	1	7	3	216
Bluebird	70	41	20	8	17	3	4	3	166
Other	58	114	42	14	20	4	2	..	254
Total	410	319	177	78	134	21	20	20	1 179
Toyota									
Camry	1 257	871	508	262	405	64	21	34	3 422
Corolla	458	220	172	91	102	35	11	28	1 117
Vienta	457	212	95	45	78	9	2	8	906
Other	651	311	371	88	237	29	39	21	1 747
Total	2 823	1 614	1 146	486	822	137	73	91	7 192

EXPLANATORY NOTES

INTRODUCTION

- 1** This publication presents monthly data for registrations of new motor vehicles.
- 2** The statistics in this publication are based on procedures using the Vehicle Identification Number (VIN), adopted by the State and Territory motor vehicle registration authorities. The VIN system allows more accurate classification of vehicles. In the case of some States, data processed using the VIN are not strictly comparable with data processed prior to December 1990.

SCOPE AND COVERAGE

- 3** Motor vehicle registration statistics are obtained from the State and Territory motor vehicle registration authorities. The statistics reflect the information recorded in registration documents. With the exception of Queensland, the statistics shown do not depart significantly from actual registrations during the period.

In the case of Queensland, a number of registrations processed in a month actually relate to vehicles registered prior to that month. Because of the lags from purchase to registration, and processing lags, the published statistics for the period can vary from actual sales of new vehicles for the same period.

- 4** The scope of the statistics:
 - includes:
 - passenger vehicles
 - light commercial vehicles
 - trucks
 - buses
 - motorcycles (note: not included in Totals)
 - vehicles with diplomatic and consular plates
 - State and Commonwealth owned vehicles
 - excludes:
 - vehicles belonging to the defence forces
 - recreation vehicles such as trail bikes and sand dune buggies (in those States where registration is required).

SEASONAL ADJUSTMENT

- 5** Seasonal adjustment is a means of removing the estimated effects of normal seasonal variation from the series so that the effects of other influences can be more clearly recognised.
- 6** Seasonal adjustment does not remove from the series the effect of irregular or non-seasonal influences (e.g. the introduction of new models, processing delays, industrial disputes).
- 7** Irregular influences that are highly volatile can make it difficult to interpret the series even after adjustment for seasonal variation.
- 8** Seasonally adjusted series are calculated for the 'Passenger vehicles', 'Other vehicles' and 'Total vehicles' series for each State and Territory and are aggregated to obtain the total for Australia.
- 9** Seasonal adjustment factors are analysed and revised as necessary annually.

TREND ESTIMATES

10 The smoothing of seasonally adjusted series to create trend estimates reduces the impact of the irregular component of the seasonally adjusted series. The trend estimates are derived by applying a 13-term Henderson-weighted moving average to the respective seasonally adjusted series. These trend series are used to analyse the underlying behaviour of the series over time.

11 While this smoothing technique enables trend estimates to be produced for the latest month, it does result in revisions to the trend estimates for the most recent months as data for subsequent months become available. Generally subsequent revisions become smaller and after three months, usually have a negligible impact on the series. Changes in the original data and re-estimation of seasonal factors may also lead to revisions to the trend. For further information, see *A Guide to Interpreting Time Series — Monitoring Trends: an Overview* (1348.0) or contact the Assistant Director, Time Series Analysis on (06) 252 6345.

RELATED PUBLICATIONS

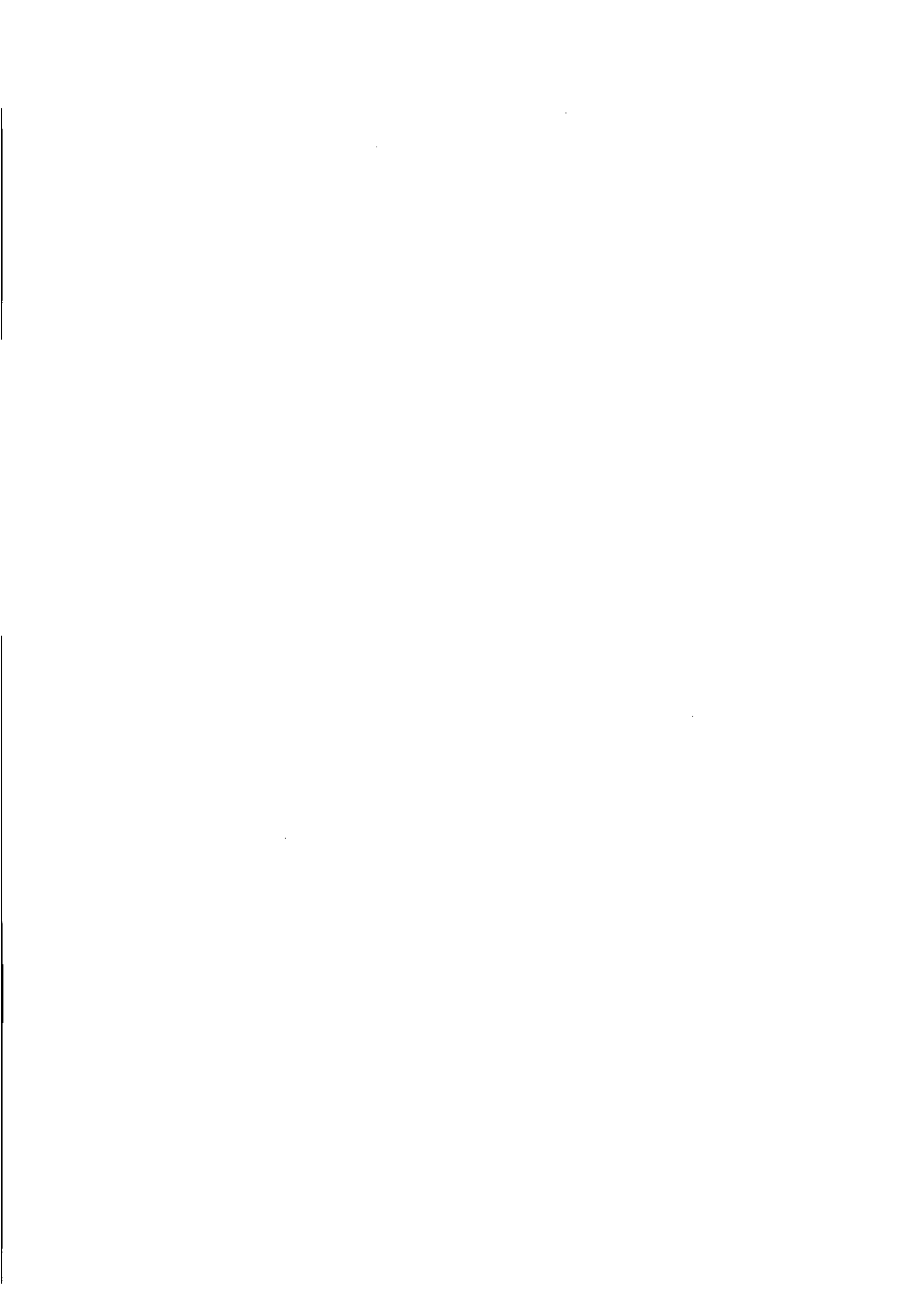
12 For a more detailed break-up of the monthly figures presented here, inquiries should be made to Kevin Yeadon on 06 252 6255 or to any ABS office. Data on total vehicle registrations, both new and re-registrations, is available in *Motor Vehicle Census, Australia, 30 June 1993* (9309.0).

SYMBOLS AND OTHER USAGES

n.p. not available for publication, but included in totals.

GLOSSARY

- Articulated trucks** Vehicles constructed primarily for load carrying consisting of a prime mover having no significant load carrying area but with a turn table device which can be linked to a trailer. With or without a trailer the gross combination mass will be 3.5 tonnes or more.
- Buses** Includes all passenger vehicles having more than nine seats, including the driver.
- Light commercial vehicles** Describes goods carrying vehicles less than 3.5 tonnes gross vehicle mass. Included are utilities, panel vans, cab-chassis and forward control vehicles (whether four-wheel drive or not).
- Motor cycles** Includes 2 and 3 wheeled mopeds, scooters, motor tricycles and motor cycles with side cars.
- Non-freight carrying trucks** Includes specialist vehicles such as ambulances, mobile cranes or vehicles fitted with special purpose equipment and having no goods carrying capacity.
- Passenger vehicles** Includes cars, station wagons, four-wheel drive passenger vehicles and forward control passenger vehicles with up to nine seats (including the driver).
- Registrations** This includes all registrations processed by the motor vehicle registration authorities in the States and Territories during the relevant period.
- Rigid trucks** Vehicles constructed primarily for load carrying with a gross vehicle mass of 3.5 tonnes or more.
- VIN** The Vehicle Identification Number (VIN) uniquely identifies each vehicle. Embedded in the number are details of make and model together with other relevant information about the vehicle. The VIN is collected by the motor vehicle registration authorities at the time of registration.



FOR MORE INFORMATION . . .

The ABS publishes a wide range of information on Australia's economic and social conditions. A catalogue of publications and products is available from any of our offices (see below).

INFORMATION CONSULTANCY SERVICES

Special tables or in-depth data investigations are provided by the ABS Information Consultancy Service in each of our offices (see below).

ELECTRONIC DATA SERVICES

A large range of data is available via on-line services, diskette, magnetic tape, tape cartridge and CD ROM. For more details about our electronic data services, contact any ABS office (see below).

BOOKSHOP AND SUBSCRIPTIONS

There is a large number of ABS publications available from the ABS Bookshops in each of our offices. You can also receive any of our publications on a regular basis. Join our subscription mailing service and have your publications mailed to you in Australia at no additional cost. Telephone our Publications Subscription Service toll free Australia wide on 008 0206 08.

ABS EMAIL ADDRESSES

Keylink	STAT.INFO/ABS
X.400	(C:AU,A:TELMEMO,O:ABS,SN:INFO,FN:STAT)
Internet	STAT.INFO@ABS. TELEMEMO.AU

GENERAL SALES AND INQUIRIES

- | | |
|-------------------------|------------------------|
| * Sydney 02 268 4611 | * Adelaide 08 237 7100 |
| * Melbourne 03 615 7000 | * Hobart 002 20 5800 |
| * Brisbane 07 222 6351 | * Darwin 089 43 2111 |
| * Perth 09 360 5140 | * Canberra 06 252 6007 |
- Information Services, ABS
PO Box 10, Belconnen ACT 2616



2930100001950

ISSN 1323-4528

RRP \$12.00